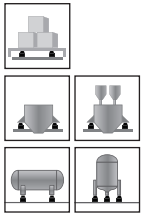
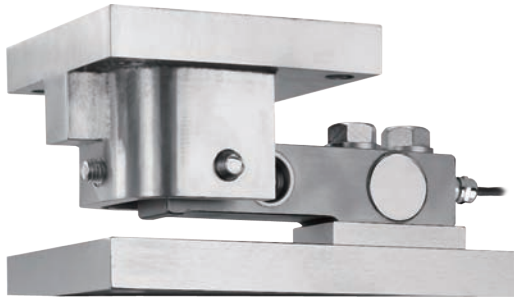
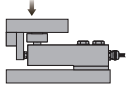


Weighing Mount



Capacities

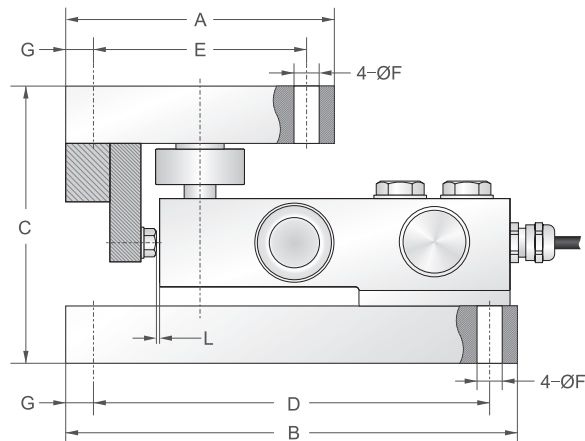
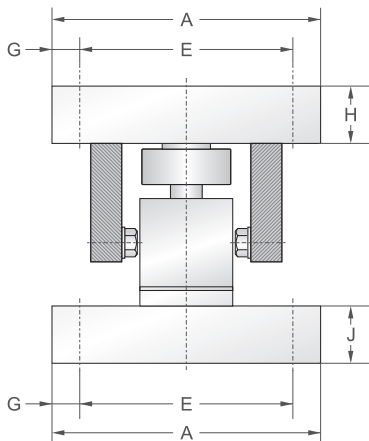
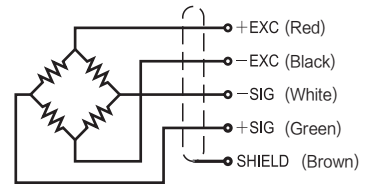
250kg, 500kg, 1000kg, 2000kg, 3000kg, 5000kg, 10000kg, 13500kg, 20000kg

Features

- Stainless steel
- Dynamic loading module
- SBSZ (single ended shear beam stainless steel load cell) installed
- Equipped with adjustable construction throughout
- Suitable for floor scales, blending & mixing systems, batching systems, roller conveyer scale and process control, etc.

Schematic

- Red: + input
- Black: - input
- White: - output
- Green: + output
- Brown: shield

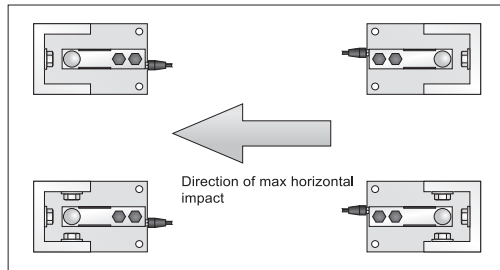


Capacities		A	B	C	D	E	F	G	H	J	L
0.25t~1t	mm	114.3	177.8	104.8	152.4	88.9	11	12.7	19	19	1.6
2t	mm	114.3	177.8	111.4	152.4	88.9	11	12.7	19	19	1.6
3t	mm	114.3	182.8	111.4	152.4	88.9	11	12.7	19	19	1.6
5t	mm	152.4	235	136.5	184.2	101.6	17.5	25.4	31.8	25.4	1.6
10t/13.5t	mm	203.2	355.6	190.5	304.8	152.4	20.6	25.4	44.5	44.5	3
20t	mm	228.6	406.4	228.6	342.9	165.1	28.5	31.8	50.8	50.8	3

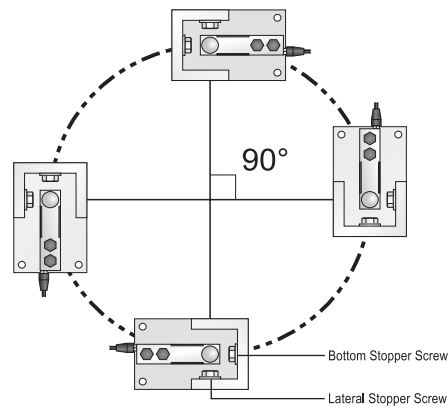
Weighing Mount

Load Cell Specifications			
Rated Output	2.0mV/V \pm 0.1%	Safe Temp. Range	-10°C to + 70°C
Zero Balance	\pm 1% of rated output	Temp. Compensated	-10°C to + 40°C
Creep after 30 minutes	\pm 0.03% of rated output	Safe Overload	150%
Nonlinearity	\pm 0.03% of rated output	Input Impedance	387 ohm \pm 20 ohm
Hysteresis	\pm 0.03% of rated output	Output Impedance	350 ohm \pm 5 ohm
Repeatability	\pm 0.03% of rated output	Insulation Resistance	\geq 5000 M ohm (50V DC)
Temp. effect on output	\leq 0.002% of applied output/°C	Rated Excitation	10V DC/AC
Temp. effect on zero	\leq 0.002% of rated output/°C	Maximum Excitation	15V DC/AC
Wire Length	6m(0.25t~5t) / 9.5m(10t~13.5t) / 13m(20t)	Wire Material	Red(+ E) Black(- E) White(- S) Green(+ S)

Installation



Rectangular Layout



Tangential Layout



Note : when only 2 modules are bearing impact, they should be at the same side of the scale.