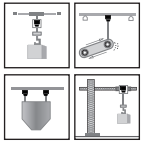
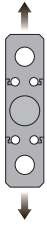


Plate-Ring Type



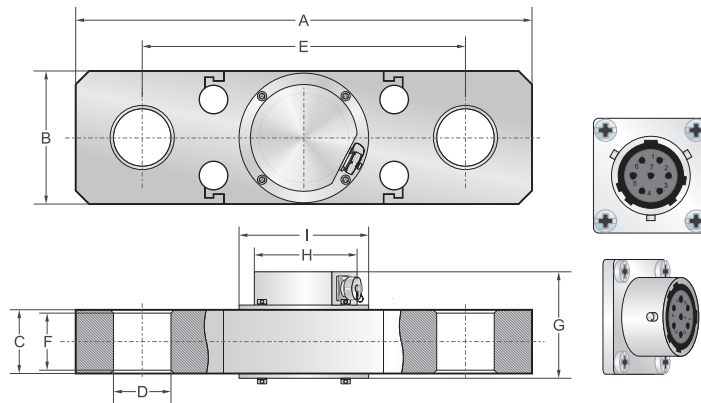
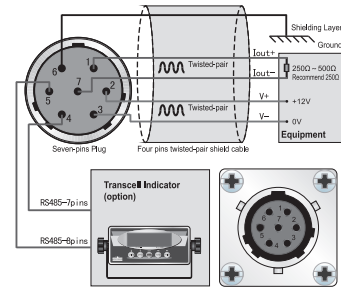
Capacities

40t, 60t

Features

- Nickel-plated alloy steel construction
- High accuracy
- High stability
- High protection class
- 0 ~ 20mA output / RS485 signal output (option)
- Easy to install
- Use in tough industrial environment
- Suitable for hook scales, hopper scales, packing scales and overload limiter, etc.

Schematic



Capacities		A	B	C	D	E	F	G	H	I
40t	mm	480	140	67	2XØ60.5	340	60	112	Ø112	Ø136
60t	mm	520	160	87	2XØ70.5	360	80	132	Ø112	Ø136

Specifications

Rated Output	2.0mV/V±0.1%	Safe Temp. Range	-40°C to + 70°C
Creep after 30 minutes	±0.3% of rated output	Temp. Compensated	-10°C to + 40°C
Nonlinearity	±0.3% of rated output	Safe Overload	150%
Hysteresis	±0.25% of rated output	Ultimate Overload	300%
Repeatability	±0.2% of rated output	Input Impedance	387 ohm ± 20 ohm
Temp. effect on output	≤0.02% of applied output /°C	Rated Excitation	12V DC/AC
Temp. effect on zero	≤0.02% of rated output /°C	Maximum Excitation	15V DC/AC
Wire Type	7 pins connector		