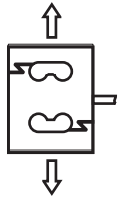
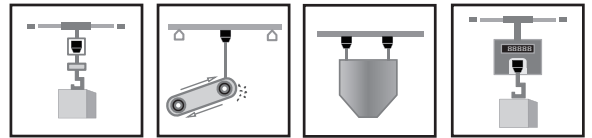


BAB-MT



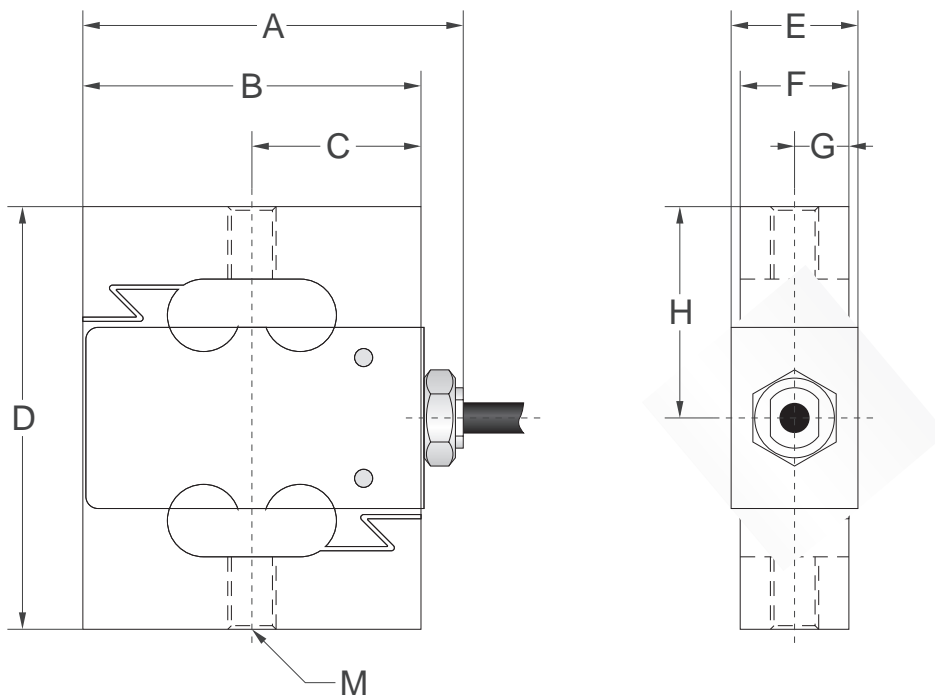
Features

- S-Type overload protected Load Cell
- Safe overload to 10x capacity (both directions)
- Easy to Install, Stable & Reliable
- Suitable for material testing, batching systems, industrial scales and package systems, etc.
- Rated up to IP67
- Compatible with Interface SMT and Omega LCCE



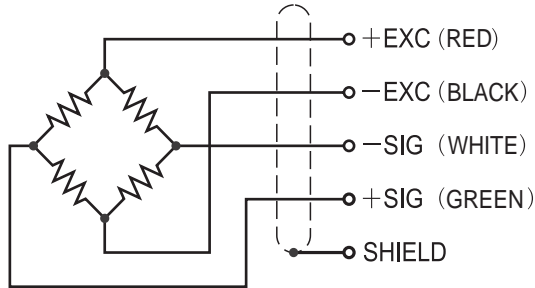
Dimensions

Capacity		A	B	C	D	E	F	G	H	M
11-225 lbf	in	2.52	2.20	1.10	2.76	0.83	0.71	0.35	1.38	1/4"-28 UNF
	mm	64	56	28	70	21	18	9	35	



Schematic

Red : + input
 Black : - input
 Green : + output
 White : - output



Capacities / Model

11 lbf / 50N	BAB-MT-50N
22 lbf / 100N	BAB-MT-100N
45 lbf / 200N	BAB-MT-200N
112 lbf / 500N	BAB-MT-500N
225 lbf / 1000N	BAB-MT-1000N

Specifications

Rated Output	2.0 mV/V \pm 1%
Zero Balance	\pm 3% of rated output
Creep after 30 minutes	\pm 0.03% of rated output
Nonlinearity	\pm 0.03% of rated output
Hysteresis	\pm 0.03% of rated output
Repeatability	\pm 0.03% of rated output
Temp. effect on output	\leq 0.002% of applied output/ $^{\circ}$ C
Temp. effect on zero	\leq 0.002% of rated output/ $^{\circ}$ C
Safe Temp. Range	-10 $^{\circ}$ C to + 70 $^{\circ}$ C
Temp. Compensated	-10 $^{\circ}$ C to + 40 $^{\circ}$ C
Safe Overload	1000% (11-45) 500% (112-225)
Input Impedance	410 ohm \pm 5 ohm
Output Impedance	350 ohm \pm 3 ohm
Insulation Resistance	\geq 5000 M ohm (50V DC)
Rated Excitation	10V DC/AC
Maximum Excitation	15V DC/AC
Cable Length	5 ft (1.5 m)
Cable Color Code	Red(+E) Black(-E) Green(+S) White(-S)