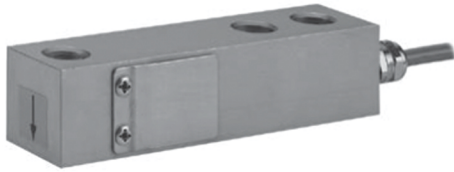


Single Ended Shear Beam

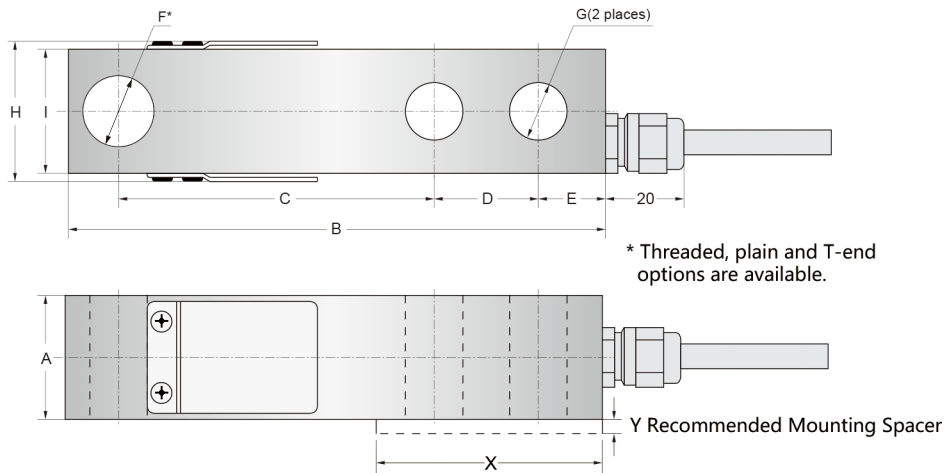


Capacities

150kg

Features

- Single ended shear beam load cell
- Nickel-plated alloy steel
- High accuracy
- High stability
- Easy to install
- Suitable for floor scales, pallet truck weighing, tank and silo weighing, etc.



Capacities		A	B	C	D	E	F	G	H	I	X	Y
150kg	mm	30.5	130	76.2	25.4	15.75	Ø18.1	Ø13.5	36	30.5	57	4

Specifications

Accuracy class	C1	C3	Temp. range, compensated	-10 to +40°C
Max. no. of intervals (n)	1000	3000	Temp. range, safe	-20 to +70°C
Y = Emax/Vmin	1400	10000	Max. safe central overload	150% of R.C.
Zero return, 30 min.	±0.03% of applied load	±0.017% of applied load	Ultimate central overload	300% of R.C.
Total error (per OIML R60)	±0.05% of rated output	±0.02% of rated output	Excitation, recommended	10VDC or VAC RMS
Temp. effect on zero	±0.01% of rated output/°C	±0.0023% of rated output/°C	Excitation, maximum	15VDC or VAC RMS
Temp. effect on output	±0.003% of applied load/°C	±0.001% of applied load/°C	Input impedance	385 Ohm ± 10 Ohm
Rated output—R.O.	2.0mV/V		Output impedance	351 Ohm ± 5 Ohm
Rated output tolerance	±0.1% of rated load		Insulation resistance	> 2000 M ohm
Zero balance	±2% of rated load		Cable length	3m
Recommended torque	136N*m		Cable type	6-wire, braided, polyurethane, dual floating screen
Environmental protection	IP67		Color code	GN(+S) BK(-E) WT(-S) RD(+E) BU(+SEN) BN(-SEN)