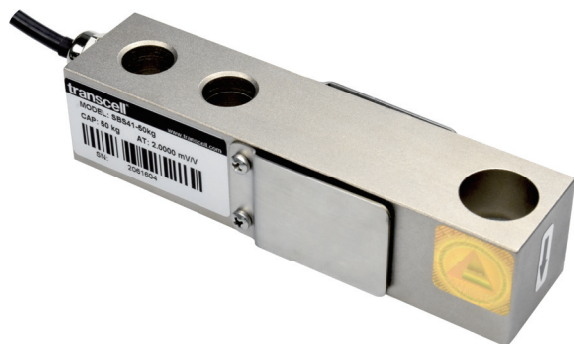


Single Ended Beam



Capacities

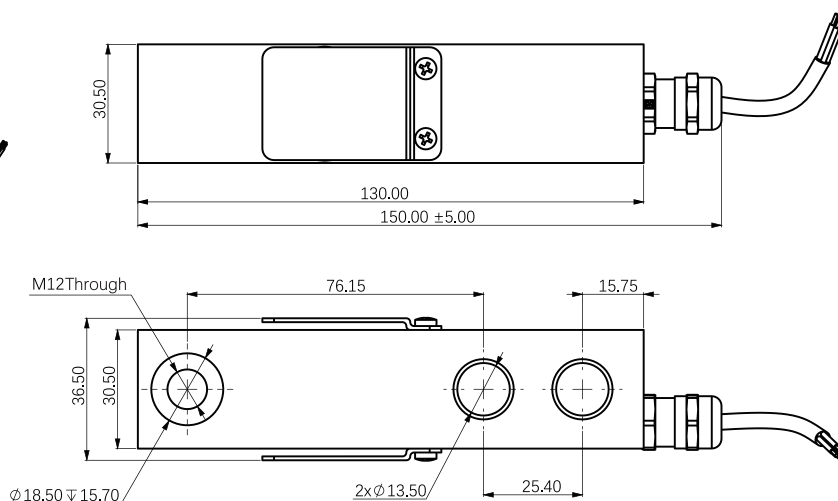
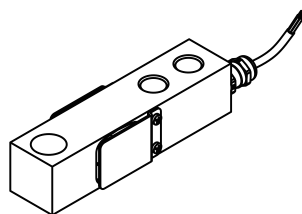
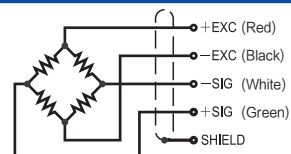
50kg

Features

- Single ended beam load cell
- Alloy steel construction
- High accuracy
- High stability
- Easy to install
- Protected against corrosion by nickel-plated treatment
- Suitable for floor scales, blending & mixing systems, belt scales and batching systems, etc.

Schematic

Red: + input
Black: - input
White: - output
Green: + output



Specifications

Rated output (R.O)	2.0 mV/V	Cable spec	6x26AWG
Rated output tolerance	±0.002 mV/V	Temp range, safe	-20~60°C
Zero balance	±0.02 mV/V	Temp range, compensated	-10~40°C
Creep (30min)	±0.015% of load	Max. safe overload	200% of R.C
Linearity	±0.02% of R.O	Input impedance	385 ohm ± 10 ohm
Hysteresis	±0.02% of R.O	Output impedance	350 ohm ± 5 ohm
Repeatability	±0.015% of R.O	Insulation resistance	≥5G ohms (50V DC)
Temp comp on Span	0.001% of applied output/°C	Cable material	PU
Temp comp on Zero	0.0023% of rated output/°C	Cable structure	Braid shield
Cable length	3m	IP	IP67
Recommend Exc Voltage	10V DC/AC	Max Exc Voltage	15V DC/AC